

# Nepal Earthquake Response: Bajhang

## Situation Report

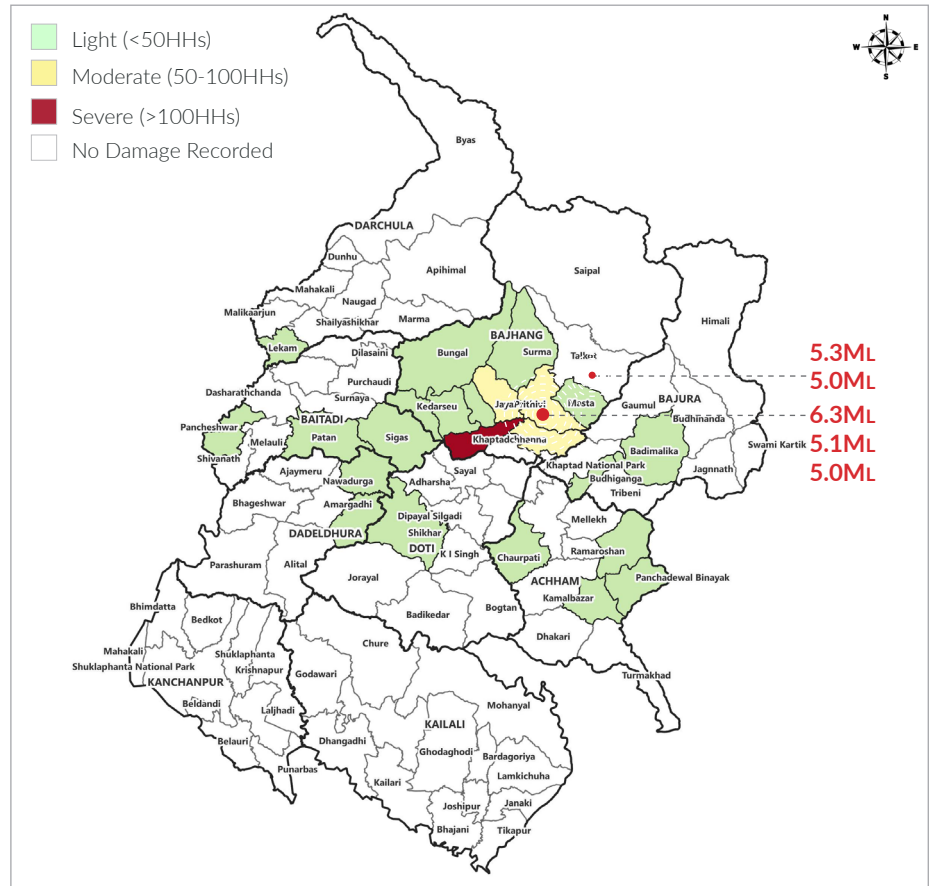
(as of 04 October 2023)



This report is produced in a joint response effort of National Disaster Risk Reduction and Management Authority (NDRRMA) and Ministry of Internal Affairs and Law (MoIAL) - Sudurpashchim Province. It covers the situation of Bajhang and neighbouring districts following the earthquakes and aftershocks on 3 October 2023.

## Highlights

- 7 districts** are reported to be affected by the **5.3Ml** and **6.3Ml** earthquake and its after-shocks.
- 1 Female** lost her life due to earthquake induced landslide in Bajhang.
- 18 people** are injured in Bajhang, **5** in Achham, **2** in Bajura and **2** in Baitadi.
- 378 private houses** is reported to be damaged.
- 7 school buildings, 1 health center, 25 government buildings** are damaged in Achham, Baitadi, Bajhang, Bajura, Dadeldhura, Darchula and Doti districts of Sudurpaschim Province.
- Particularly traditional buildings made from brick masonry in mud mortar and stone masonry in mud mortar have collapsed. Parts of buildings have crumbled, and several houses have developed cracks.



## Situation Overview

On **3 October 2023**, an earthquake of magnitude **5.3Ml** followed by another **6.8Ml** struck Bajhang district of Nepal which killed **1 people**, and injured **27** others. Approximately **1,900 people** (**378 households**) have been displaced across seven districts. The quake not only affected Bajhang district, but it severely affected other neighboring districts and the tremors were felt as far as Delhi in India. The impact of this earthquake was felt heavily in and around the epicenter of Bajhang district including the neighboring districts Achham, Baitadi, Bajura, Dadeldhura, Darchula, and Doti.

As per the initial report from the Ministry of Internal Affairs and Law (MoIAL) - Sudurpaschim Province and respective districts and municipalities a total of **378 houses** have been damaged. **33 public buildings** that includes schools, hospitals have been damaged. Besides physical damages, hundreds of displaced families await rehabilitation and moving into



Photo: NDRRMA

temporary shelters. People panicked and rushed out of their homes as they felt the tremor. People from damaged houses and from those that had sustained major cracks are living in temporary shelters.

### Sudurpaschim Provincial Disaster Management Committee (PDMC) Decisions

- Free treatment of injured people by the recent Bajhang earthquakes and landslides. Ministry of Social Development to direct health institutions to provide proper treatment.
- Concerned local governments and district administration offices directed to provide treatment to injured people in nearby district hospitals and government health institutions.
- A coordinated system has been set up to distribute immediate disaster relief materials to the affected people. District Disaster Management Committee (DDMC) of concerned districts will undertake the sole responsibility in distribution of relief materials by mandatorily informing the Chief District Officer at district level, while also informing the Ministry of Internal Affairs and Law (MoIAL) at provincial level.
- Relevant development partners, UN agencies, national and international non-governmental organizations (I/NGOs) working at provincial level are requested to support the distribution of emergency relief materials to the people affected by the earthquake.

### Response

Initial Rapid Assessment is ongoing in municipalities of affected districts with support from municipalities and local ward representatives. DDMC meetings made several decisions to manage and accelerate relief and response.

Discussions with district and local level stakeholders are ongoing for response and support. Currently, government stakeholders together with partner organizations are jointly working on relief and response for affected households.

### Needs and Priorities

- **378** damaged households require urgent and immediate relief support in terms of shelter and non-food items.
- **5,037** tents and **1,890** mattress for all the affected districts.
- Team comprising of **132** engineers and surveyors for identification of emergency shelter and housing reconstruction needs.
- Emergency shelter needs of NPR. 2 crores (estimated for 378 houses at NPR. 50,000 per household).

### Loss and Damage

Districts	Private Housing		Schools	Health Sector	Government Building
	Full	Partial			
Achham	1	3			5
Baitadi	2	3			3
Bajhang	64	277			9
Bajura	9	13			6
Dadeldhura		4			
Darchula		1			2
Doti		1	7	1	
<b>Total</b>	<b>76</b>	<b>302</b>	<b>7</b>	<b>1</b>	<b>25</b>

### Temporary Shelter

Districts	Temporary Shelter
	Need
Achham	4
Baitadi	5
Bajhang	341
Bajura	22
Dadeldhura	4
Darchula	1
Doti	1
<b>Total</b>	<b>378</b>

*\*based on the number of households fully damaged*



Districts	CGI Sheets		Tarpaulin		Mattress		Blanket		Tent	
	Needs	Coverage	Needs	Coverage	Needs	Coverage	Needs	Coverage	Needs	Coverage
Achham	12	0	12	0	20	0	20	0	4	0
Baitadi	15	0	15	0	25	0	25	0	5	0
Bajhang	1023	0	10000	0	1705	0	20000	0	5000	0
Bajura	66	0	66	0	110	0	110	0	22	0
Dadeldhura	12	0	12	0	20	0	20	0	4	0
Darchula	3	0	3	0	5	0	5	0	1	0
Doti	3	0	3	0	5	0	5	0	1	0
<b>Total</b>	<b>1134</b>		<b>10111</b>		<b>1890</b>		<b>20185</b>		<b>5037</b>	

### Supporting Agencies

Supporting Organization	Status	Temporary Shelter	Cash Support	CGI Sheet	Tarpaulin	Mattress	Blanket	Tent	Kitchen Set	Non food relief items (NFRI)
Nepal National Social Welfare Association (NNSWA)	Planned									100
UNDP	Planned							2		
MoIAL/UNFPA/CARE	Planned				500					
CARE/NEEDS/HPP	Planned								150	
<b>Total</b>					<b>500</b>			<b>2</b>	<b>150</b>	<b>100</b>



Government of Nepal  
Ministry of Home Affairs  
**National Disaster Risk Reduction and Management Authority**  
Singhadurbar, Kathmandu



Government of Nepal  
**Ministry of Internal Affairs and Law**  
Sudurpaschim Province - Dhangadi, Kailali

**For further information, please contact:**

Dhurba Bahadur Khadka  
Under Secretary/Spokesperson  
Telephone: 9851320269  
Email: info@bipad.gov.np, ndrrma@gmail.com